



Let Us Chase The Squirrel

Song variation

Part 2.

Math for your ears!



©toonesam.org

Vocabulary review:

Time Signature: It tells you how the music should be counted.

Measure: A specific number of beats defined by the time signature.

Bar Line: A vertical straight line between measures.

Count: 1, 2, 1, 2, 1, 2, 1, 2.

The diagram illustrates musical notation in 2/4 time. It shows four measures, each containing two quarter notes. The first measure is labeled with a time signature of 2/4. Above the notes, the counts '1, 2' are written for each measure. Brackets under each pair of notes are labeled 'Measure'. Vertical lines between measures are labeled 'Bar Line'. An orange arrow points from the text 'Time signature' to the 2/4 symbol. Another orange arrow points from the text 'Measure' to the bracket under the first two notes. A third orange arrow points from the text 'Bar Line' to the vertical line between the second and third measures.

Time signature

Measure

Bar Line

©toonesam.org



Answer page:
(Part 1.)

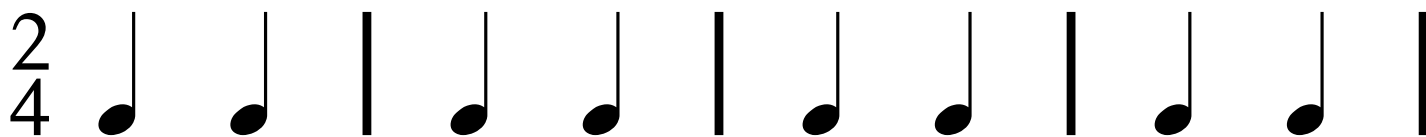
- 1) You just heard 6 measures.
- 2) There were 2 beats in each measure.
- 3) So there were 12 beats altogether in the whole piece.

Explanation : 6 groups of 2 beats = 12 beats
 $6 * 2 = 12$

Let Us Chase The Squirrel

Song variation
Part 2.

Answer page (Part 2.)



Do Re Mi Mi Do Re Mi Re



Do Re Mi Mi

Create you own music game!



Here is how:

1. Print out the "Create you own music" page.
2. Make a musical piece and write the name of each note right below the note itself.
3. Play your musical piece (or just a part of it) first, using your tablet or keyboard.
4. Ask the following questions:
 - "How many measures did you just hear?"
 - "How many beats were in each measure?"
 - "So how many beats were there altogether in the whole piece?"

©toonesam.org



Let Us Chase The Squirrel


Song variation

Part 2.

Create your own music!

Name: _____

Use the following 3 notes: Do, Re and Mi.

2/4 

2/4 

(Make sure that you only use Do, Re and Mi!)

©toonesam.org





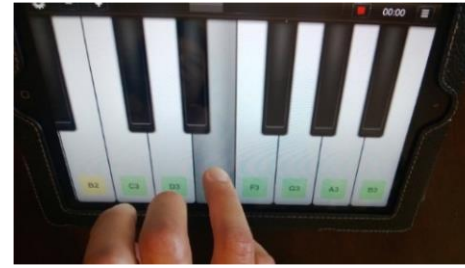
Hand Signs

Piano Fingering Chart

Music Notes



"Mi"



Note E (Mi)



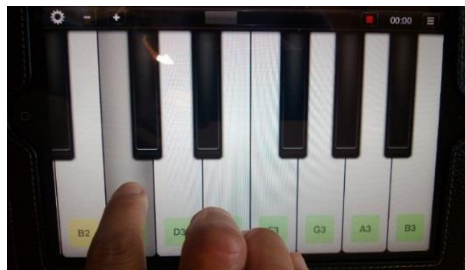
"Re"



Note D (Re)



"Do"

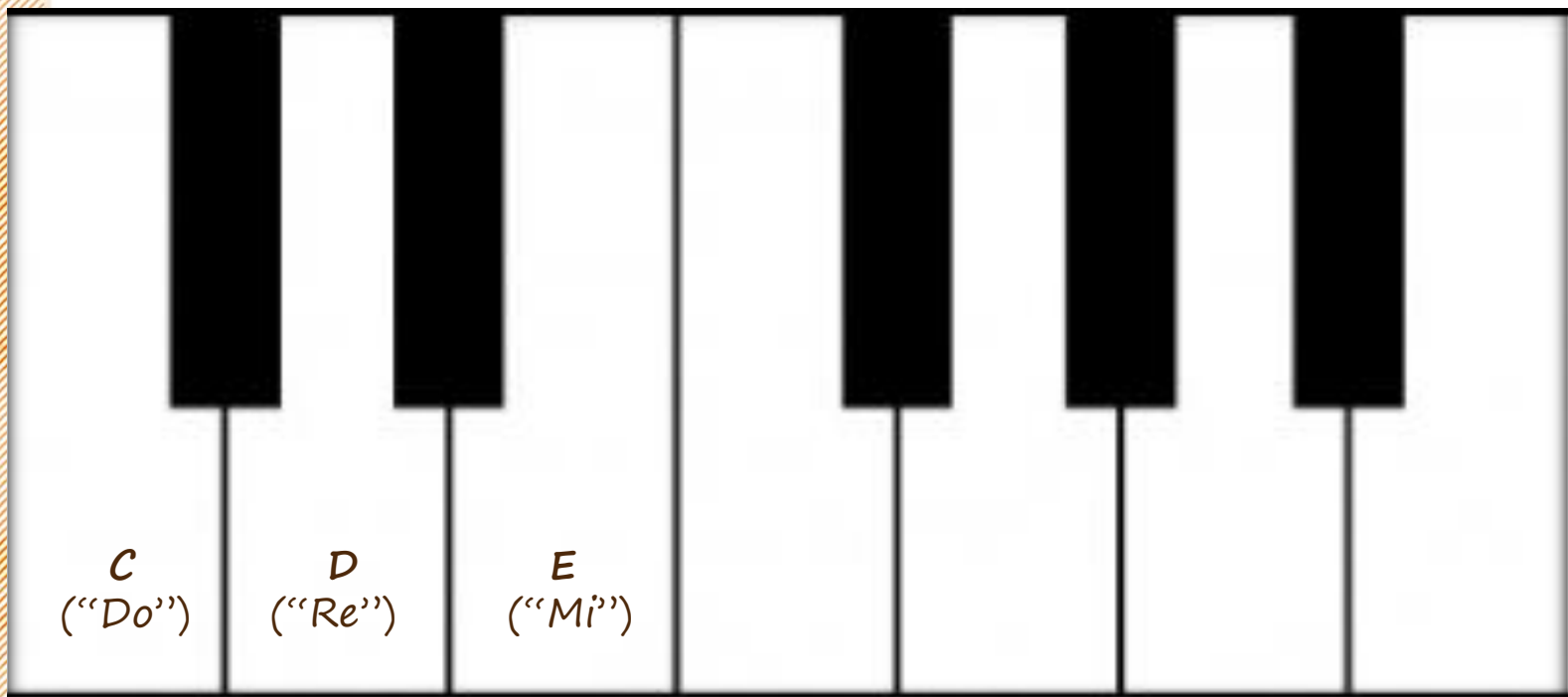


Note C (Do)



©toonesam.org

Keyboard Practice Pad



©toonesam.org

*You are fantastic!
Thank you!*

